



'Poorti – A post mastectomy kit'

Restoring confidence, dignity and femininity of breast cancer survivors



CONTACT US

 **Aarna Biomedical Products
Private Limited**



• *Quality* • *Affordability* • *Accessibility*

"A social enterprise involved in development, manufacturing, marketing and distribution of affordable high quality user-centric solution(s) for unmet medical needs"

Aarna Biomedical Products Private Limited

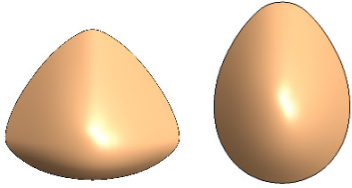
2nd Floor Incubator,
Translational Health Science & Technology Institute,
NCR Biotech Science Cluster,
3rd Milestone, Faridabad –Gurgaon Expressway,
Faridabad –121001
Haryana, India

Mobile : +91 8105311590
Email-ID : info@arnabiomed.in
Website : www.arnabiomed.in

COMPONENTS OF POORTI KIT

PROSTHESIS

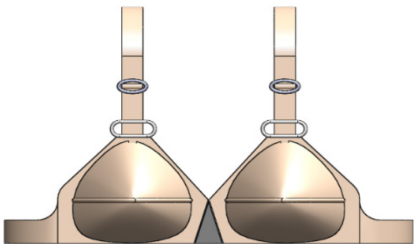
Triangular & Oval Shape



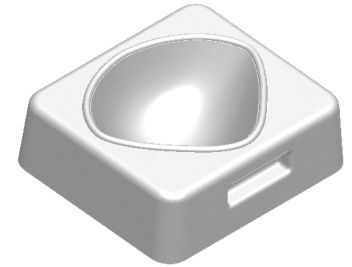
PROSTHESIS COVERS



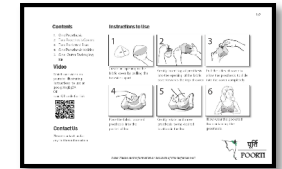
POCKETED BRAS



PROSTHESIS HOLDER



INSTRUCTIONS MANUAL



OUTER PACKAGING KIT



Kit containing light weight silicone breast prosthesis and all accessories

Dimensions:

1. Kit (Size 1 to 8) – 26.5cm/10.5in x 24.5cm/9.75in x 13.5cm/5.25in
2. Kit (Size 9 &10) – 29cm/11.5in x 27cm/10.75in x 15cm/6in

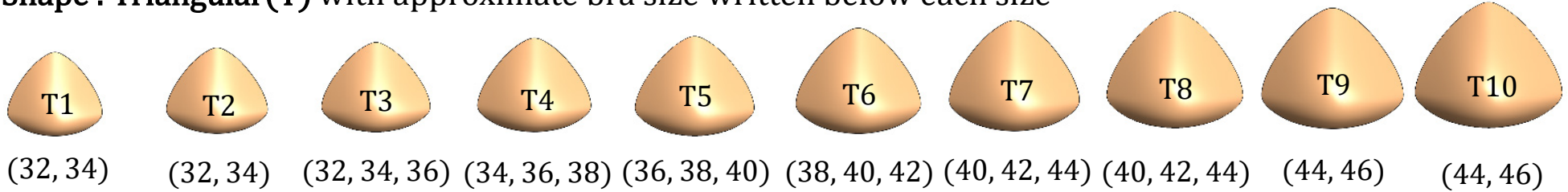
**1-min video showing how to use Poorti Kit is available on:
<https://www.youtube.com/watch?v=lj1ZSHMBQK8>**



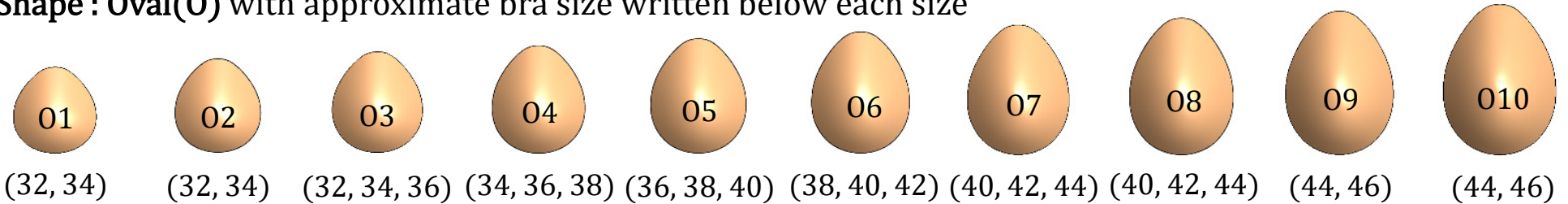
LIGHT WEIGHT SILICONE BREAST PROSTHESIS

Available in 2 shapes with 10 sizes per shape

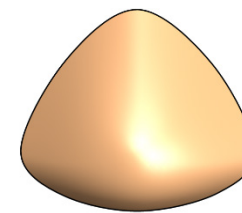
Shape : Triangular(T) with approximate bra size written below each size



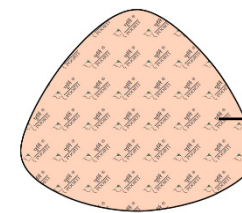
Shape : Oval(O) with approximate bra size written below each size



- Flat back (without cavity) for better firmness and projection from body



Front View of Prosthesis



Back View of Prosthesis

→ **FLAT BACK**

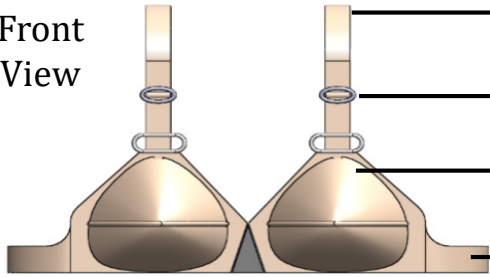
- Prosthesis are manufactured at our ISO 13485:2016 certified in-house production facility using light weight silicone (33% lighter than standard silicone sold in market) imported from Germany and outer PU film from United Kingdom.



POCKETED BRA

Available in black and white colour

Front View



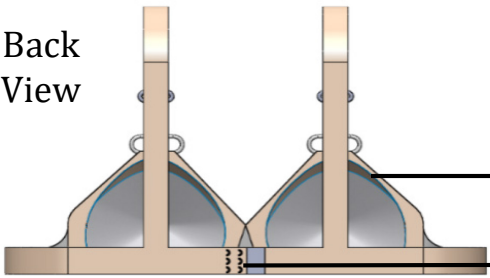
Wide strap to help reduce shoulder strain

Strap length adjuster

Cups made of poly-cotton suitable to Indian weather

Buffed elastic to prevent skin marks and irritation

Back View



Pockets present on both left and right side to insert prosthesis as per requirement

2x3 hooks for adjustment and firm grip

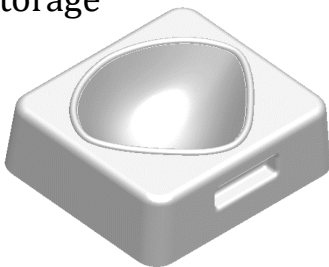
OUTER KIT

- Concise outer kit which conceals the inner contents
- Water proof



HOLDER

- Helps in keeping the shape intact and prevents from any accidental pricks during storage



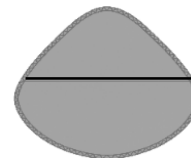
PROSTHESIS COVER

Front View



- Front portion of cover is made of stretchable fabric which orients itself onto the frontal portion of the prosthesis

Back View



- Back portion of cover is made of cotton to absorb and dissipate sweat effectively